

CO.SIME.

EQUIPMENT FOR ATEX





GAS	II2G Ex d IIC T2 ÷ T5	Gb	IP66	Zone 1 - Zone 21 - Zone 2 - Zone 22	
DUST	II2D Ex tb IIIC T95°C ÷ T295°C	Db	IP66	❄ -20°C ÷ ☀ +40°C	❄ -20°C ÷ ☀ +80°C

Materiale :
 corpo : lega leggera
 Accessori: Acciaio zincato (a richiesta in acciaio inox)
Viteria :
 Acciaio inox AISI 304
Guarnizioni :
 +40°C EPDM, +60°C Silicone
Peso :
 1,5 ÷ 6,5 kg

Material :
 body : light alloy
 accessories: galvanized steel hardware (stainless steel upon request)
Hardware :
 Stainless steel AISI 304
Gaskets :
 +40°C EPDM, +60°C Silicon
Weight :
 1,5 ÷ 6,5 kg

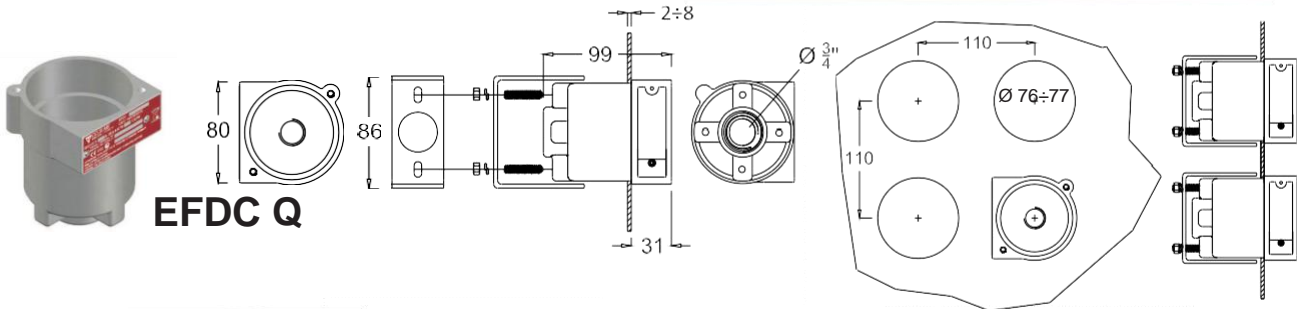


CARATTERISTICHE:

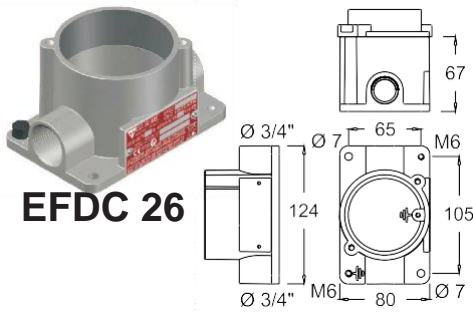
Custodie EFDC, per installazione di combinazioni di pulsanti, selettori e segnalazione (colonnine comando motori, ecc.)

FEATURES:

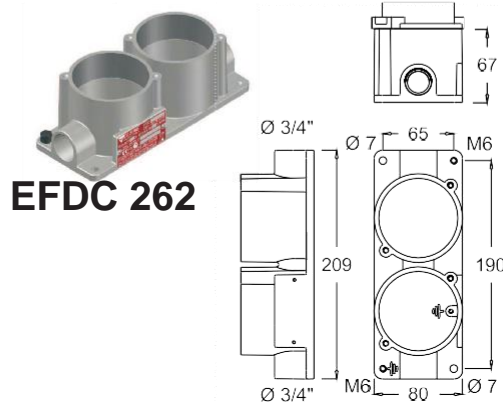
EFDC enclosures, for installation of multiple push buttons, selectors and signaling lamps, with small size and fit command and signaling units (motor control stations, etc.)



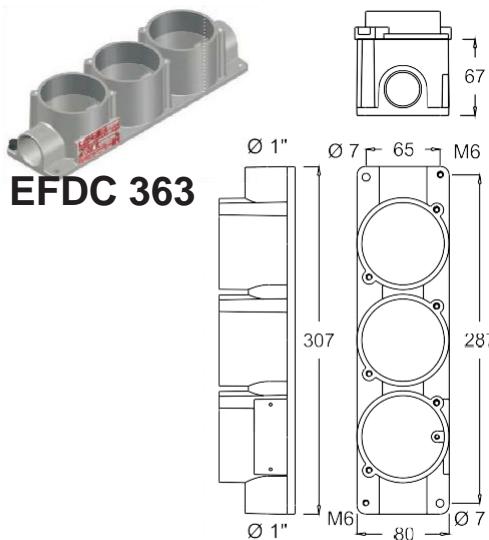
EFDC Q



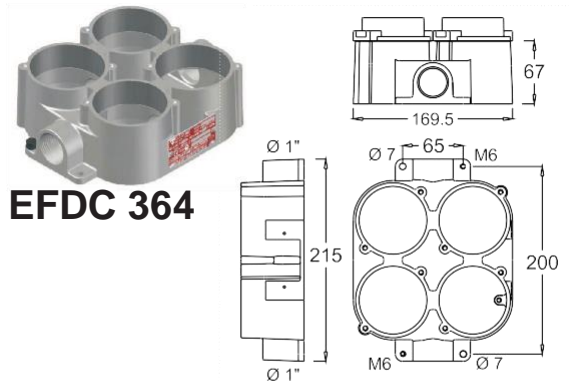
EFDC 26



EFDC 262



EFDC 363



EFDC 364



GAS	II2G Ex d IIC T4 ÷ T5	Gb
DUST	II2D Ex tb IIIC T95°C ÷ T130°C	Db

IP66	Zone 1 - Zone 21 - Zone 2 - Zone 22	
IP66	❄ -20°C ÷ ☀ +40°C	❄ -20°C ÷ ☀ +80°C

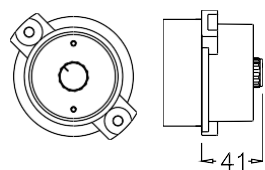
Materiale :	corpo : lega leggera
Viteria :	Acciaio inox AISI 304
Guarnizioni :	+40°C EPDM , +60°C Silicone
Elementi di contatto:	Autopulenti dorati
	Morsetti: a vite con serrafilo 2x2,5mm ²
	Corrente nominale: 10A
Material :	body : light alloy
Screw:	Stainless steel AISI 304
Gaskets :	+40°C EPDM , +60°C Silicon
Electrical contacts :	Self cleaning golden contacts
	Rated current 10A
	Terminals: On screw with plate clamp 2x2,25 mm ²

Codice Code	Resistenza Resistance	Descrizione Description
EFD P	Da precisare	Potenziometro Potentiometer

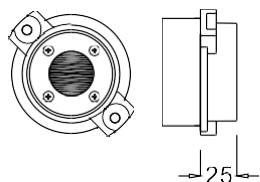
Codice Code	Contatti Contacts	Descrizione Description
EFD 0 EFD 0S	1 NC 1 NO+1 NC	Pulsante di arresto Stop push button Targa rossa Red label
EFD 1 EFD 1S	1 NO 1 NO+1 NC	Pulsante di marcia Start push button Targa verde Green label
		Pulsante Nero Black button



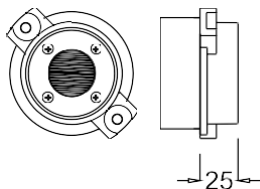
EFD P



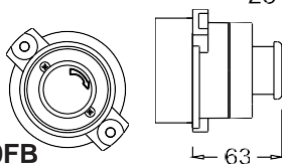
EFD 0



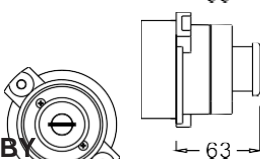
EFD 1



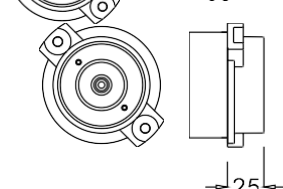
EFD 0FB



EFD 0FBY



EFD 0F



Codice Code	Contatti Contacts	Descrizione Description
EFD 0FB EFD 0SFB	1 NC 1 NO+1 NC	Pulsante di emergenza con aggancio Sblocco a rotazione Stay put emergency push button twist to release
EFD 0SF/BY EFD 1S	1 NO 1 NO+1 NC	Pulsante di emergenza con aggancio Sgancio a chiave Stay put emergency push button key released
		Fungo rosso Ø 39 Red mushroom Ø 39
		Targa Gialla Yellow label
EFD 9YF EFD 9YFS	2 NO 1 NC+ 1 NO	Pulsante nero con blocco in entrambe le posizioni Both position black key locked push button

Codice Code	Contatti Contacts	Descrizione Description
EFD 0F EFD 0SF	1 NC 1 NO+1 NC	Pulsante di emergenza Emergency push button Fungo rosso Ø35 mm Red mushroom Ø 35 mm
		Comprende la scatola EFDC It include EFDC enclosure Targa gialla Yellow label

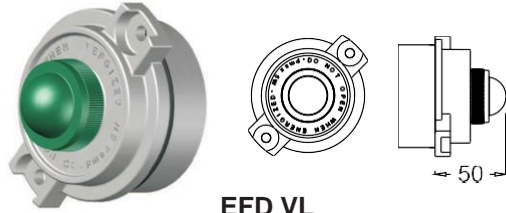
Esempio composizione (EFDC 363) con montati:
Pulsante di marcia (EFD1) + Pulsante di arresto (EFD 0) + Pulsante di emergenza (EFD 0FBY) = EFDC (1) (0) (0FBY)
Code composition example:
Enclosure with assembled three elements (EFDC 363)
Start button (EFD1) + Stop button (EFD 0) + Emergency button (EFD 0FBY)= EFDC (1) (0) (0FBY)



GAS	II2G Ex d IIC T2 ÷ T5	Gb	IP66	Zone 1 - Zone 21 - Zone 2 - Zone 22
DUST	II2D Ex tb IIIC T95°C ÷ T295°C	Db	IP66	❄️ -20°C ÷ ☀️ +40°C ❄️ -20°C ÷ ☀️ +80°C

SEGNALATORE LUMINOSO PER SCATOLE EFDC
PILOT LIGHTS FOR EFDC BOXES

EFD



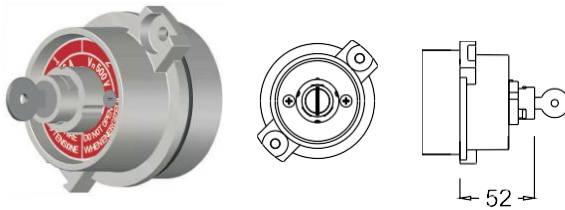
EFD VL

Codice Code	Tensione Voltage	Colore Colour	Attacco
EFD VL	12÷230V max 5W	Verde/Green	Ba9S
EFD RL	12÷230V max 5W	Rosso/Red	Ba9S
EFD BL	12÷230V max 5W	Bianco/White	Ba9S
EFD GL	12÷230V max 5W	Giallo/Yellow	Ba9S
EFD AL	12÷230V max 5W	Azzurro/Blue	Ba9S

Il "Codice" non comprende la scatola EFDC e la lampada

INTERRUTTORE A CHIAVE PER SCATOLE EFDC
PILOT LIGHTS FOR EFDC BOXES

EFD 9Y

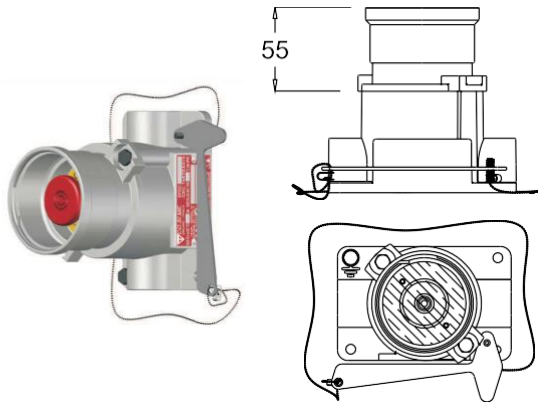


Codice Code	Corrente nom. Rated Current	Descrizione Description
EFD 9Y	16A - 500Vac	Interruttore bipolare ON-OFF ON-OFF Bipolar switch Targa rossa Red label Estrazione chiave in pos. OFF a richiesta in pos. OFF e ON Key release in OFF pos. upon request in OFF and ON pos.

Il "Codice" non comprende la scatola EFDC
The "Code" doesn't include EFDC enclosure

PULSANTE DI EMERGENZA CON VETRO DI PROTEZIONE
EMERGENCY PUSH BUTTON WITH GLASS PROTECTION

EFDC(0...)



Dimensioni scatole EFDC : Vedi sez I1
Dimensions EFDC boxes: See sect I1

Codice Code	Contatti Contacts	Descrizione Description
EFDC (0E)	1 NC	Rompi il Vetro e premi (ritorno a molla) Break the glass and push (automatic spring return)
EFDC (0SE)	1 NO+1 NC	Rompi il vetro (ritorno a molla) Break the glass (automatic spring return)
EFDC (1E)	1 NO	Rompi il vetro e premi con aggancio sblocco a rot. Break the glass and push pull to release
EFDC (0BE)	1 NC	Fungo rosso Ø 35 mm Red mushroom Ø 35 mm
EFDC (0SBE)	1NO+1 NC	Targa gialla Yellow label Martello in acciaio inox-catena in ottone nichelato (Peso: 42 gr) Stainless steel hammer - nickel-plated brass chain (weight: 42 gr)

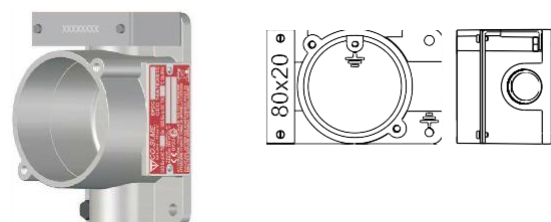
TAPPO PER SCATOLE EFDC
PLUG FOR EFDC BOXES

GUF 06

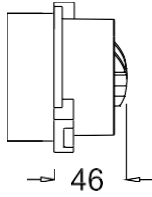
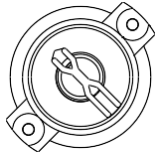


SUPPORTI PER SCATOLE EFDC
SUPPORTS FOR EFDC BOXES

EFD 01/9

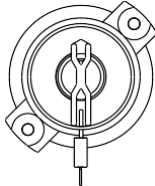


Ex	GAS	II2G Ex d IIC T4 ÷ T5	Gb	IP66	Zone 1 - Zone 21 - Zone 2 - Zone 22	
	DUST	II2D Ex tb IIIC T95°C ÷ T130°C	Db	IP66	❄️-20°C ÷ ☀️+40°C	❄️-20°C ÷ ☀️+80°C



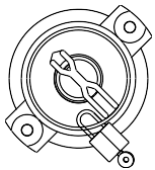
Elemento a tre posizioni
lucchettabile
Aggiungere al codice il
suffisso **L**

*Three position padlocking
element
Add to code the suffix **L***



Elemento a due posizioni
lucchettabile
Aggiungere al codice il
suffisso **L**

*two position padlocking
element
Add to code the suffix **L***



Codice Code	Diagram	1	2	11-12	12-14	21-22	22-24	31-32	32-34	1 0 2	1 0 2
EFD 5 (Fig. 1)				×	○						
EFD 52 (Fig. 1)				×	○						
EFD 53 (Fig. 1)				×	○						
EFD 50 (Fig. 2)				×	○						
EFD 50+ (Fig. 2)				×	○						
EFD 502 (Fig. 2)				×	○						
EFD 502+ (Fig. 2)				×	○						
EFD 503 (Fig. 2)				×	○						
EFD 6 (Fig. 3)				○	×						
EFD 63 (Fig. 3)				○	×						
EFD 64 (Fig. 3)				○	×						
EFD 7 (Fig. 4)				○	×						
EFD 8 (Fig. 4)				○	×						
EFD Y (Fig. 5)				×	○						

Simboli schema elettrico e funzionale
Electrical and arrangement symbols

- Ritorno a molla
Spring return
- Comando rotativo
Rotary command
- Contatto aperto
Opened contact
- Contatto chiuso
Closed contact
- Contatto senza interruzione
Contact without interruption

