

# Product datasheet

## HO 54 W/865

LUMILUX T5 HO | Tubular fluorescent lamps 16 mm, high output, with G5 base



## Product datasheet

---

### Technical data

#### Electrical data

Nominal voltage	120 V
Nominal wattage	54.00 W
Rated lamp efficacy (HF data 25 °C)	76 lm/W
Rated wattage	54.10 W
Nominal current	0.46 A

#### Photometrical data

Color rendering index Ra	≥80
Rated luminous flux	4100 lm
Luminous flux at	4100 lm
Luminous flux at	4750 lm
Light color	865
Rated color temperature	6500 K
Nominal luminous flux	4100 lm
Light color (designation)	LUMILUX Cool Daylight
Rated LLMF at 2,000 h	0.95
Rated LLMF at 4,000 h	0.93
Rated LLMF at 6,000 h	0.92
Rated LLMF at 8,000 h	0.90
Rated LLMF at 12,000 h	0.90
Rated LLMF at 16,000 h	0.90
Rated LLMF at 20,000 h	0.89
Color temperature	6500 K
Luminous flux	4100 lm

#### Dimensions & weight

---



## Product datasheet

Tube diameter	16 mm
Length	1149 mm
Length with base excl. base pins/connection	1149.00 mm
Diameter	16.0 mm
Product weight	90.00 g
Outer bulb	T16
Maximum diameter	16.0 mm

### Temperatures & operating conditions

Rated ambient temp.w.max.luminous flux	35.0 °C
--	---------

### Lifespan

Service life	19000 h <sup>1)</sup>
Lifespan	24000 h <sup>1)</sup>
Rated lamp survival factor at 2,000 h	0.99
Rated lamp survival factor at 4,000 h	0.99
Rated lamp survival factor at 6,000 h	0.99
Rated lamp survival factor at 8,000 h	0.99
Rated lamp survival factor at 12,000 h	0.99
Rated lamp survival factor at 16,000 h	0.97
Rated lamp survival factor at 20,000 h	0.85
Operation mode LLMF/LSF	HF
Rated lamp life time	24000 h

<sup>1)</sup> With preheat ECG

### Additional product data

Base (standard designation)	G5
Mercury content	1.7 mg
Product remark	Suitable for ECG operation only/Lamp designed for internal luminaire temperatures of 30...40 °C; optimum luminous flux achieved at 35 °C
Appropriate disposal acc. to WEEE	Yes
Successor EAN	4050300591568
Predecessor EAN	4050300453378

### Capabilities

Dimmable	Yes
Suitable for indoor	Yes

### Certificates & standards

## Product datasheet

Energy efficiency class	G
Energy consumption	60 kWh/1000h

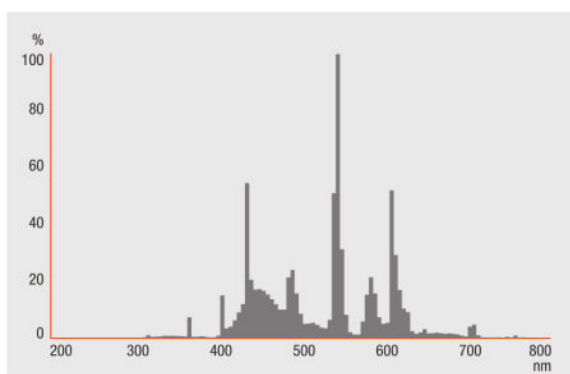
### Country specific categorizations

Order reference	HO 54W/865
-----------------	------------

### Environmental information

Information according Art. 33 of EU Regulation (EC) 1907/2006 (REACH)	
Date of Declaration	18-04-2022
Primary Article Identifier	4050300453378   4050300591568
Declaration No. in SCIP database	In work

### Light Distribution

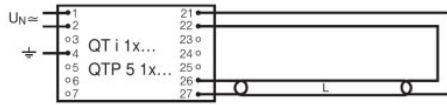


FL\_865

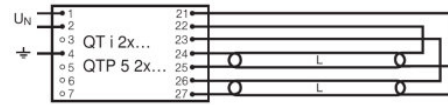
### System guarantee

OSRAM System+ Guarantee in combination with OSRAM ECGs

## Product datasheet



QUICKTRONIC INTELLIGENT QT i 1x QTP 5 1x



QUICKTRONIC INTELLIGENT QT i 2x QTP 5 2x

### Ecodesign regulation information:

Separate control gear and light sources must be disposed of at certified disposal companies in accordance with Directive 2012/19/EU (WEEE) in the EU and with Waste Electrical and Electronic Equipment (WEEE) Regulations 2013 in the UK. For this purpose, collection points for recycling centres and take-back systems (CRSO) are available from retailers or private disposal companies, which accept separate control gear and light sources free of charge. In this way, raw materials are conserved and materials are recycled.

### References / Links

For more information on the system guarantee and the terms and conditions of the guarantee visit

- ▶ [www.osram.com/system-guarantee](http://www.osram.com/system-guarantee)

### Disclaimer

Subject to change without notice. Errors and omission excepted. Always make sure to use the most recent release.

OSRAM is distribution partner  
of LEDVANCE of LAMPS

**OSRAM**

OSRAM GmbH  
Marcel-Breuer-Strasse 6  
80807 Munich, Germany

## HO 54 W/865

LUMILUX T5 HO | Tubular fluorescent lamps 16 mm, high output, with G5 base

Product name	Product name ECG	EAN	Nominal current	Nominal wattage + Power loss	Power factor $\lambda$ [PIM]	Luminous flux at 35 °C
HO 54 W/865	QT-FIT 5/8 1x54-58	4008321873828	0.25 A	59.00 W	0.98	4450 lm
	QT-FIT 5/8 2x54-58	4008321873842	0.49 A	116.00 W	0.98	4450 lm
	QTi 1x28/54/35/49 GII	4008321383358	0.26 A	58.00 W	0.97	4450 lm
	QTi 1x28/54 DIM	4050300870588	0.26 A	58.80 W	0.99	4450 lm
	QTi 2x28/54/35/49 GII	4008321383419	0.51 A	115.00 W	0.98	4450 lm
	QTi 2x28/54 DIM	4050300870717	0.51 A	115.00 W	0.98	4450 lm
	QTi DALI 1x28/54 DIM	4050300870809	0.26 A	58.80 W	0.99	4450 lm
	QTi DALI 2x28/54 DIM	4050300870502	0.51 A	115.00 W	0.99	4450 lm
	QTP-OPTIMAL 1x54-58	4008321873729	0.26 A	54.00 W	0.98	4450 lm
	QTP-OPTIMAL 2x54-58	4008321880253	0.52 A	120.00 W	0.99	4450 lm

Product name	Product name ECG	EAN	Number of lighting outlets
HO 54 W/865	QT-FIT 5/8 1x54-58	4008321873828	1
	QT-FIT 5/8 2x54-58	4008321873842	2
	QTi 1x28/54/35/49 GII	4008321383358	1
	QTi 1x28/54 DIM	4050300870588	1
	QTi 2x28/54/35/49 GII	4008321383419	2

## Product datasheet

Product name	Product name ECG	EAN	Number of lighting outlets
	QTi 2x28/54 DIM	4050300870717	2
	QTi DALI 1x28/54 DIM	4050300870809	1
	QTi DALI 2x28/54 DIM	4050300870502	2
	QTP-OPTIMAL 1x54-58	4008321873729	1
	QTP-OPTIMAL 2x54-58	4008321880253	2